

OUR PRODUCTION **HIGHLIGHTS**



Many years of experience and high-quality materials for a high-quality result.

www.schroederlux.eu

Pivot DOORS

An entrance that gives your properties in the residential and business sector even more prestige and style.

Our high-quality aluminum door combines a unique swivel mechanism with very high performance in terms of thermal insulation, air permeability, wind resistance and protection from break-ins.

The innovation

This system makes it possible to install an truly imposing front door – anything up to two meters wide (6' 7") and four meters tall (13' 5") – that can be opened and shut with the lightest touch, even though it can weigh as much as 500 kg (1100 lb). Also available with double leaves, with a side panel and/or skylight.

With its large selection of surfaces and colors, you have an almost unlimited range of design options. Whether ceramic, concrete, stone, steel, corten, wood look, carbon, glass, in discreet or vibrant colors, this remarkable door is a masterpiece.

- » Construction depth 115 mm (4.5")
- » Three sealing levels
- » Burglar resistant class RC3 (IFT Rosenheim)



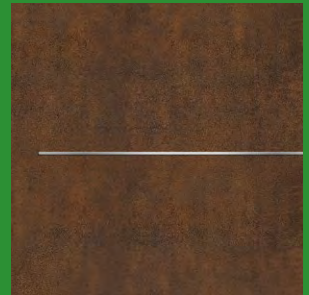
Up to **two meters wide** (6' 7")
and **four meters high** (13' 5")



Special door panels

RODENBERG, the well-known German manufacturer, now produces door panels specifically for our pivot doors in larger sizes.

Examples of your options





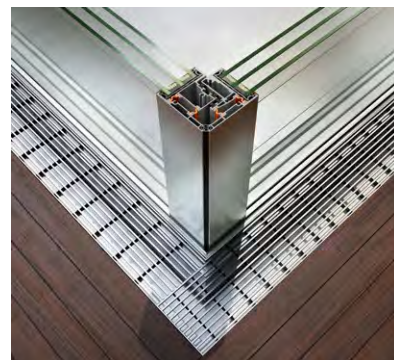
Sliding **SYSTEMS**

Exceptionally functional, excellent performance and minimalist architecture ensure a feeling of freedom and high quality of life.

The new minimalism

The new sliding system with heat insulation is the ideal solution for covering large openings and gives you the opportunity to have especially elegant designs with great functionality, excellent performance and minimalist architecture.

With its innovative and unique characteristic features, the Alumil Supreme S650 PHOS system is the perfect choice.



90° corner – without a post profile
it can be opened on both sides

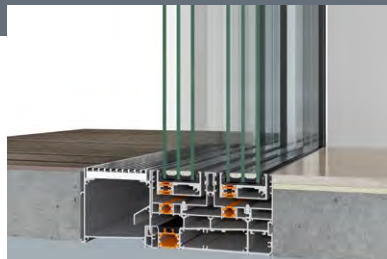
The feeling of freedom

The main advantage of this system is the improvement in your quality of life by maximizing the natural lighting and minimizing the visible aluminum face width. This brings the outside surroundings closer to residents and enhances their feeling of freedom.



Two possible threshold designs

Invisible leaf



42 mm (1.6") visible leaf



Advantages at a glance

- » **Completely concealed in the wall**
The frame system can be integrated in the masonry and the leaf is concealed on the guide rails. This guarantees the maximum amount of translucence.
- » **Special anti-distortion polyamides**
Use of 18 mm (0.7") wide, double-row polyamide on guide rails and specially laminated polyamides (18.6 mm / 0.73" or 14.8 mm / 0.58" wide), to avoid the "banana effect" due to high temperature differences.
- » **Double-row sealing brush on the guide rails**
Perimetric sealing of the frame with double row of brushes.
- » **Water drainage**
Plus, concealed attachment profiles for better water drainage.
- » **Minimally visible aluminum end face width on the locking profile**
The visible width of aluminum is only 25 mm (1") at the overlap of the sliding sashes.





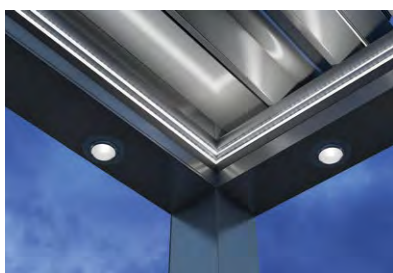
Bioclimatic **PERGOLAS**

Fully automatic and fully equipped to transform your outdoor area into a comfortable living experience.

- » The rotating slats create a robust structure adjustable up to 135° that protects you from the sun's rays, regulates brightness and enables natural ventilation. The sealed slats can cope with heavy winds and provide protection from rain and snow.
- » As a freestanding, wall-mounted or multiple construction design, it can be used in a variety of ways – to expand your living area, for a catering business or in other commercial outdoor areas.
- » With vertical sliding glass walls, foldable vertical blinds, rollable shading or sliding shutters for protection from the sun, wind and weather, and integrated infrared heaters, this pergola can be used all year round.
- » Atmospheric lighting using LED strips on crossbeams and slats, music systems and heating transform the room into a comfortable lounge both day and night.



More than sun protection, a real living area



An attractive lighting option

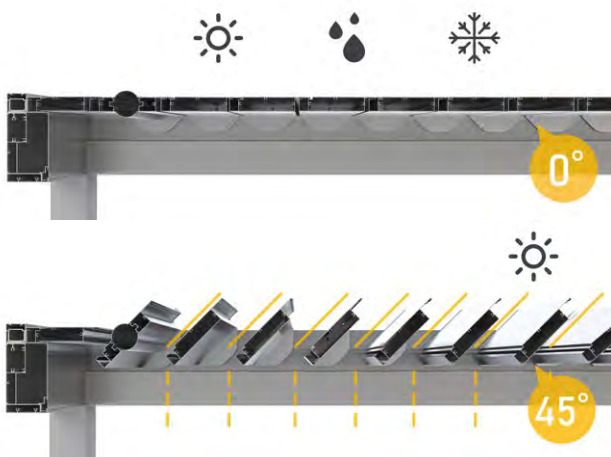


Vertical weather and sun protection by means of sliding, folding or roller components



Integrated glass partition systems create pleasant spaces full of sunlight with controllable temperatures.

In wind and weather



These pergola series, produced from Alumil sections, are extremely robust despite looking so light and can cover surprisingly large areas – of up to 50 square meters (538 sq ft) with only four posts. At the same time, they can withstand heavy winds and large falls of snow of up to 300 kg / 660 lb per square meter (2.0 m / 6.6' of snow).

We use high-quality components of

Alumil

RODENBERG 

GESICHTER EINER TÜR

Contact



Branch office

L-1221 Luxembourg
233-241, rue de Beggen

D-07907 Schleiz
Neumarkt 7

Production

D-54595 Prüm
Prümtalstraße 28

D-54597 Widdersheim
Hersdorferstraße 11



Luxembourg


Phone: +352 26 30 09 90
Business hours: 8:00 a.m. to 5:00 p.m.

Germany

Phone: +49 3663 410732
Business hours: 9:00 a.m. to 4:30 p.m.



info@schroederlux.eu

 **SCHRÖDERLUX**
BAUELEMENTE

www.schroederlux.eu